

# TRI MO

ARCHITECTURAL  
SOLUTIONS

**QBISS - COLOUR CHART**

## INTRODUCTION

With exceptional technical characteristics and the perfect visual expression, Trimo façade systems easily adjust to your vision of space.

- Unique and functional solutions with a long-life span.
- State-of-the-art technical characteristics.
- Certified quality.
- Reduced construction time
- Excellent fire performance, noise and thermal insulation.
- Attractive appearance through a wide selection of colours and shapes.

### Trimo 's range of metal façade systems:

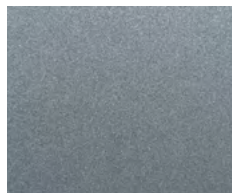
- Qbiss One - Prefabricated architectural façade system.
- Qbiss Screen - Innovative metal rainscreen system.



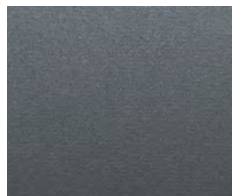
## SPECIAL METALLIC



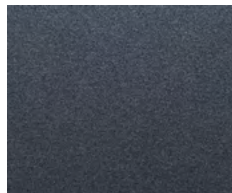
Light Silver



Silver



Dark Silver



Light Graphite



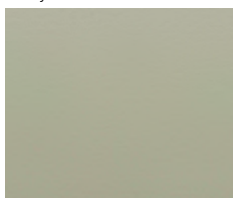
## SOLID COLOURS



White



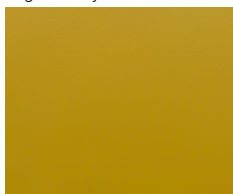
Grey White



Cream



Light Grey



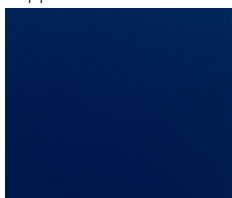
Bright Yellow



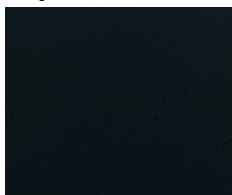
Basalt Grey



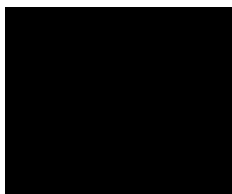
Sapphire Blue



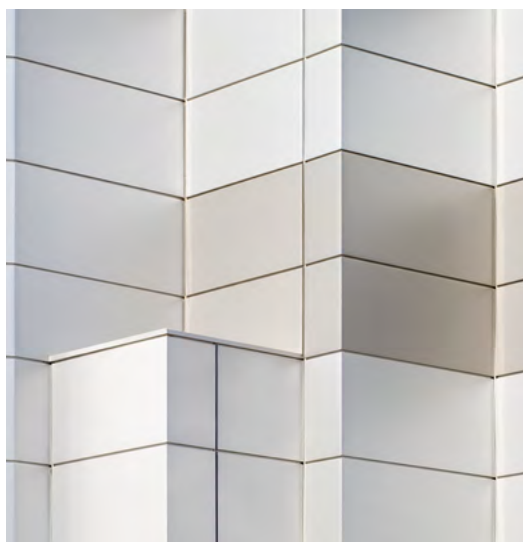
Bright Blue



Anthracite



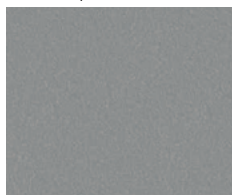
Black



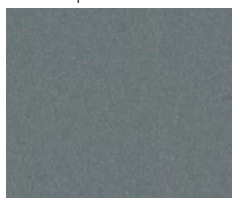
## COLORCOAT PRISMA® ELEMENTS\*



Sirius Sparkle



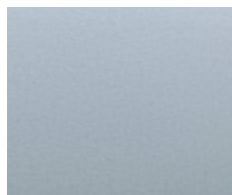
Orion Sparkle



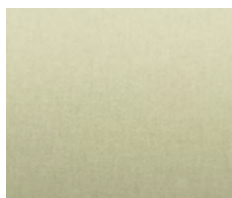
Zeus Sparkle



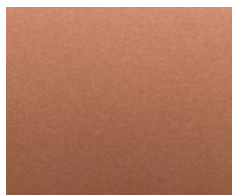
Seren White



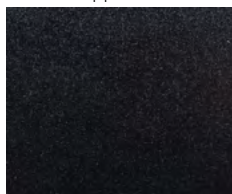
Seren Silver



Seren Gold



Seren Copper



Seren Black



STAINLESS STEEL \*\*



Quadro Lucido



2WL Lucido



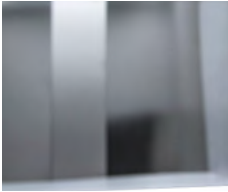
Pelle Lucido



Dots Lucido



5WL Lucido



Shiny Mirror

COLOUR REFERENCE TABLE

Special Metallic

| TRIMO COLOUR   | NEAREST RAL OR OTHER REFERENCE COLOUR |
|----------------|---------------------------------------|
| SILVER         | RAL 9006                              |
| LIGHT SILVER   | N/A                                   |
| LIGHT GRAPHITE | N/A                                   |
| DARK SILVER    | RAL 9007                              |

Solid colours

| TRIMO COLOUR  | NEAREST RAL OR OTHER REFERENCE COLOUR |
|---------------|---------------------------------------|
| BLACK         | RAL 9005                              |
| ANTHRACITE    | RAL 7016                              |
| CREAM         | RAL 1015                              |
| WHITE         | RAL 9010                              |
| GREY WHITE    | RAL 9002                              |
| BRIGHT YELLOW | NCS S 1070 Y10R                       |
| LIGHT GREY    | RAL 7035                              |
| BASALT GREY   | RAL 7012                              |
| SAPPHIRE BLUE | RAL 5003                              |
| BRIGHT BLUE   | NCS S 4550 R80B                       |

Elements\*

| TRIMO COLOUR   | NEAREST RAL OR OTHER REFERENCE COLOUR |
|----------------|---------------------------------------|
| SEREN WHITE    | [Colorcoat Prisma® COLOUR]            |
| SEREN SILVER   | [Colorcoat Prisma® COLOUR]            |
| SEREN GOLD     | [Colorcoat Prisma® COLOUR]            |
| SEREN COPPER   | [Colorcoat Prisma® COLOUR]            |
| SEREN BLACK    | [Colorcoat Prisma® COLOUR]            |
| SIRUIS SPARKLE | [Colorcoat Prisma® COLOUR]            |
| ORION SPARKLE  | [Colorcoat Prisma® COLOUR]            |
| ZEUS SPARKLE   | [Colorcoat Prisma® COLOUR]            |

\*\*Stainless steel is a bespoke solution and shall be discussed with Trimo technical department on individual project basis from application and availability perspective. Colours may slightly deviate due to different monitors and prints compared to original colours. On request we will send you real metal sample.

\*Colorcoat Prisma and Seren are trademarks of Tata Steel UK Limited



External steel sheet is a hot dip galvanized thin steel sheet (according to EN10346) and pre-painted by »coil coat« technology. External sheets are available for different corrosion environments as defined for certain project.

Organic paint protections are available for environment corrosion classes up to C5, (according to classification in EN12944).

Trimo anti corrosion guarantees for wall application of special metallic and solid colours:

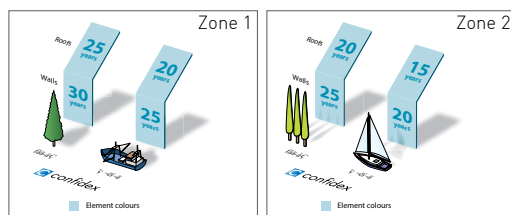
RC5 = 12 years

RC4 = 15 years

RC3 = 25 years

Special guarantees terms and conditions apply when using Tata Steel Colorcoat Prisma® Element colours with the Confidex® Guarantee by Tata Steel being available.

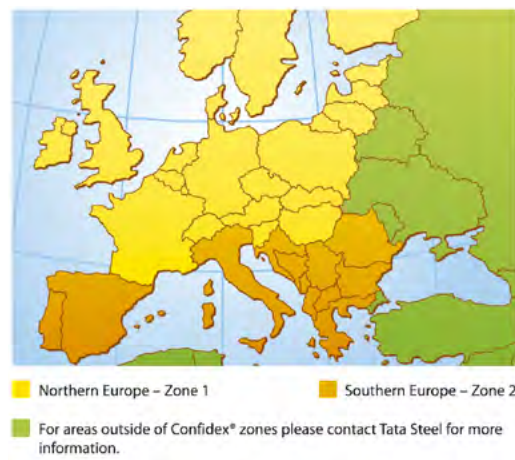
#### Confidex® Guarantee for Colorcoat Prisma®



#### Notes

1. Figures under the Coastal heading are for buildings within 1 km of any coast.
2. Full terms and conditions of the Confidex® Guarantee are on the online application form, available at [www.colorcoat-online.com/registration](http://www.colorcoat-online.com/registration)
3. Confidex® must be registered within 3 months of the building completion date for the guarantee to be valid.
4. The Confidex® Guarantee periods on the diagram above are applicable to Zone 1 and Zone 2. For more information on other zones visit [www.colorcoat-online.com/confidexmap](http://www.colorcoat-online.com/confidexmap)

#### Regions covered by the Confidex® Guarantee



The standard guarantee for Qbiss modular façade elements is 10 (ten) years from the date of dispatch unless agreed otherwise.



# TRIMO

**TRIMO D.O.O.**

PRIJATELJEVA CESTA 12,  
8210 TREBNJE, SLOVENIA

T: +386 (0)7 34 60 200

F: +386 (0)7 34 60 127

QBISS@TRIMO-GROUP.COM

WWW.TRIMO-GROUP.COM



All information issued by Trimo Group is subject to continuous development and information/details contained on this media are current at date of issue. It is user's responsibility to obtain most up-to-date information from Trimo when information/details are used for project. The last version of the document is available on:  
[www.trimo-group.com/en/trimo/downloads/brochures/](http://www.trimo-group.com/en/trimo/downloads/brochures/)