

larson metals[®]

by Alucoil[®]

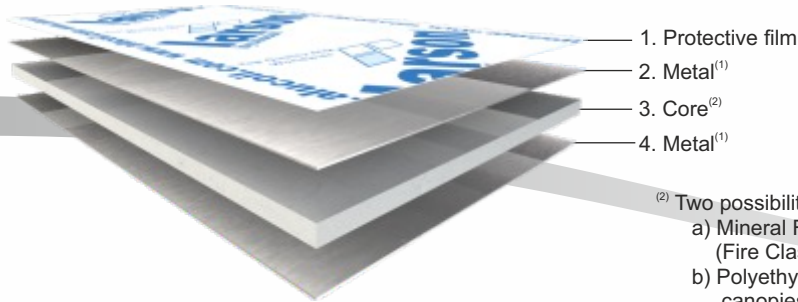
Composite Panels for
Architectural Wall Cladding



Top Quality ACM - Worldwide



Alucoil[®]
Grupo Alibérico



⁽¹⁾ Four possibilities:
a) Stainless steel
b) Copper
c) Brass
d) Zinc

⁽²⁾ Two possibilities
a) Mineral FR core
(Fire Class Architectural B-s1,d0 according EN 13501-1)⁽⁴⁾
b) Polyethylene core (product for exclusive use in low buildings canopies, signalization and corporate identity)

Panel features

Copper	Metal	Brass
4 [mm]	Total thickness	4 [mm]
0,3 EXT / 0,3 INT [mm]	Metal thickness	0,5 EXT / 0,5 INT [mm]
1000 -1200 [mm]	Standard width	1000 [mm]
1,7mm/m Δ100°C	Metal thermal expansion	2mm/m Δ100°C
Cu-DHP EN 1172	Alloy	CuZn 30/CW505L
PE - FR	Core	PE - FR
PE: a) M1 [UNE 23717 - NF P92-501] b) CLASS E [EN 13501-1] c) CLASS 0 [BS 476-6 & BS 476-7] FR: B-s1,d0 ⁽⁴⁾ [EN 13501-1]	Reaction to fire test	PE: a) M1 [UNE 23717 - NF P92-501] b) CLASS E [EN 13501-1] c) CLASS 0 [BS 476-6 & BS 476-7] FR: B-s1,d0 ⁽⁴⁾ [EN 13501-1]
PE: 8,58 - FR: 11,09 [kg/m ²]	Panel weight	PE:11,36 - FR:13,58 [kg/m ²]
PE:2130 - FR:2662 [kNcm ² /m]	Rigidity "EI"	PE:3218 - FR:3748 [kNcm ² /m]
PE:1613 - FR:2017 [mm ⁴ /m]	Moment of inertia "I"	PE:2637 - FR:3070 [mm ⁴ /m]
240 ⁽³⁾ [N/mm ²]	Ultimate tensile strength "R _m "	290 ⁽³⁾ [N/mm ²]
140 ⁽³⁾ [N/mm ²]	Elasticity limit "R _{p0,2} "	186 ⁽³⁾ [N/mm ²]
8 ⁽³⁾ [%]	Elongation "%"	36 ⁽³⁾ [%]
132000 ⁽³⁾ [N/mm ²]	Modulus of elasticity "E"	110000 ⁽³⁾ [N/mm ²]
Stainless steel [2D & Wf30]	Metal	Zinc
4 [mm]	Total thickness	4 [mm]
0,23 EXT / 0,23 INT [mm]	Metal thickness	0,5 EXT / 0,5 INT [mm]
1000 -1200 [mm]	Standard width	1000 [mm]
1,6mm/m Δ100°C	Metal thermal expansion	2,2mm/m Δ100°C
AISI316L EXT / AISI 304 INT	Alloy	Zn 99,995 (Z1 EN 1179)
FR	Core	PE
B-s1,d0 ⁽⁴⁾ [EN 13501-1]	Reaction to fire test	a) M1 [UNE 23717 - NF P92-501] b) CLASS E [EN 13501-1] c) CLASS 0 [BS 476-6 & BS 476-7]
9,62 [kg/m ²]	Panel weight	10,06 [kg/m ²]
2891 ⁽³⁾ [kNcm ² /m]	Rigidity "EI"	2165 [kNcm ² /m]
1446 ⁽³⁾ [mm ⁴ /m]	Moment of inertia "I"	2405 [mm ⁴ /m]
520 ⁽³⁾ [N/mm ²]	Ultimate tensile strength "R _m "	150 ⁽³⁾ [N/mm ²]
210 ⁽³⁾ [N/mm ²]	Elasticity limit "R _{p0,2} "	110 ⁽³⁾ [N/mm ²]
45 ⁽³⁾ [%]	Elongation "%"	40 ⁽³⁾ [%]
200000 ⁽³⁾ [N/mm ²]	Modulus of elasticity "E"	90000 ⁽³⁾ [N/mm ²]

⁽³⁾ Metal features - Extended technical data sheet under request -

⁽⁴⁾ Estimated values while lab results arrive - ⁽⁴⁾ Alucoil's vertical riveted & 45mm cassette installation systems

Composite panels for architectural wall cladding

Composite panels formed by two metal sheets bonded by a mineral filled fire resistant (FR) core or a polyethylene PE core. **larson metals®** panels are available in natural metals such as Stainless Steel, Copper, Brass and Zinc. These composite products are the ideal ecological solution and provide the sensation of liveliness from the distinction nature's finest elements.

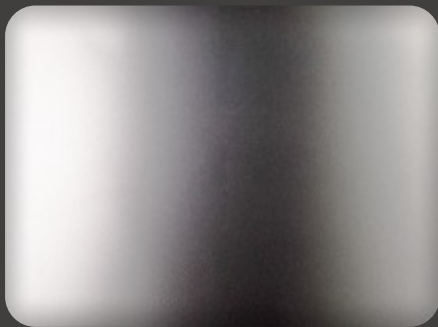
- **larson metals® stainless steel**, available in two new choices.

External Skin:

- a) 0,23mm stainless steel AISI 316L Natural granulated 2D.
- b) 0,23mm of stainless steel AISI 316L brushed finish Wf30.

Internal Skin: 0,23mm of stainless steel AISI 304 with protection primer.

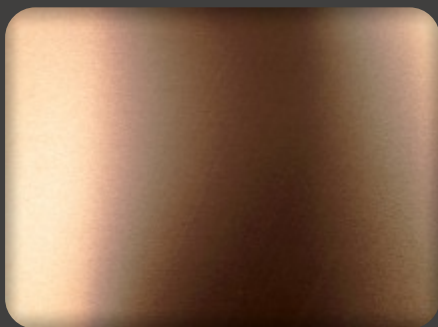
- **larson metals® copper** alloy Cu-DHP.
- **larson metals® brass** alloy Cu Zn30, natural finish.
- **larson metals® zinc** alloy Zn 99,995 (Z1 EN 1179).
 - a) Slate finish
 - b) Red finish
 - c) Blue finish
 - d) Ebano finish
 - e) Brown finish
 - f) Green finish
 - h) Gold finish



Stainless Steel 2D



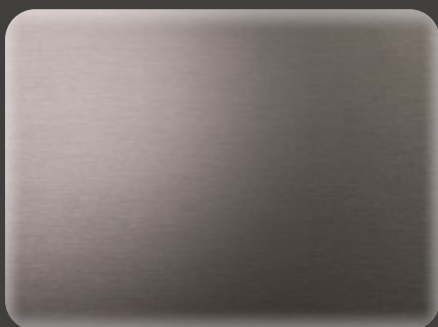
Stainless Steel WF30 Brushed



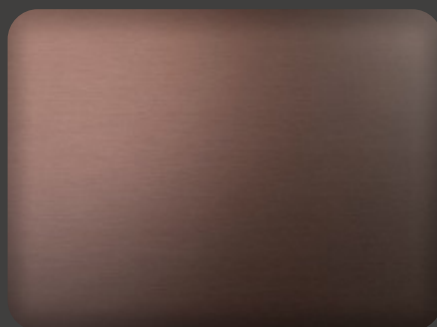
Copper



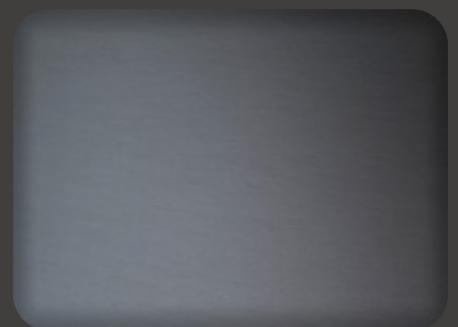
Brass



Zinc Slate



Zinc Red

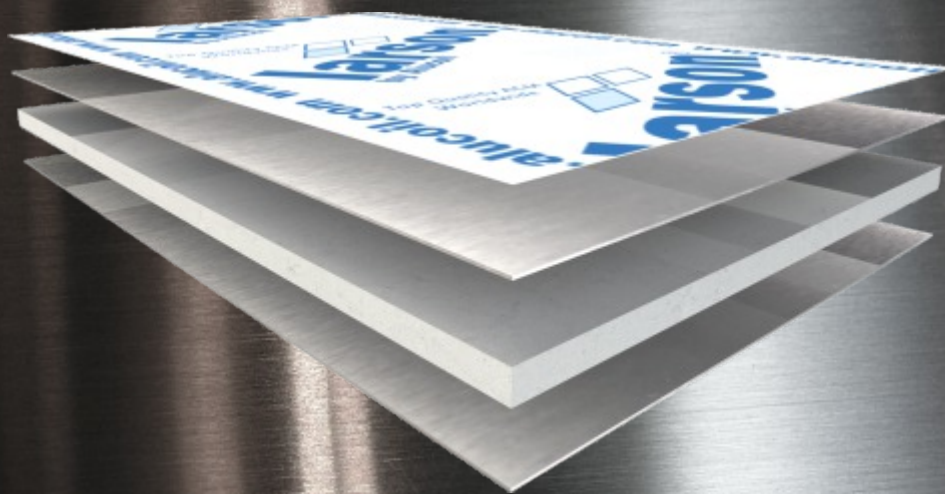


Zinc Blue

Other finishes available on request: Ebano, Brown, Green and Gold.

larson metals®

by Alucoil®



www.alucoil.com

Polígono Industrial de Bayas
C/ Ircio. Parcelas R72-77
09200 Miranda de Ebro, Burgos

SPAIN

Tel.: +34 947 333 320 Fax: +34 947 324 913
info@alucoil.com



Alucoil®
Grupo Alibérico