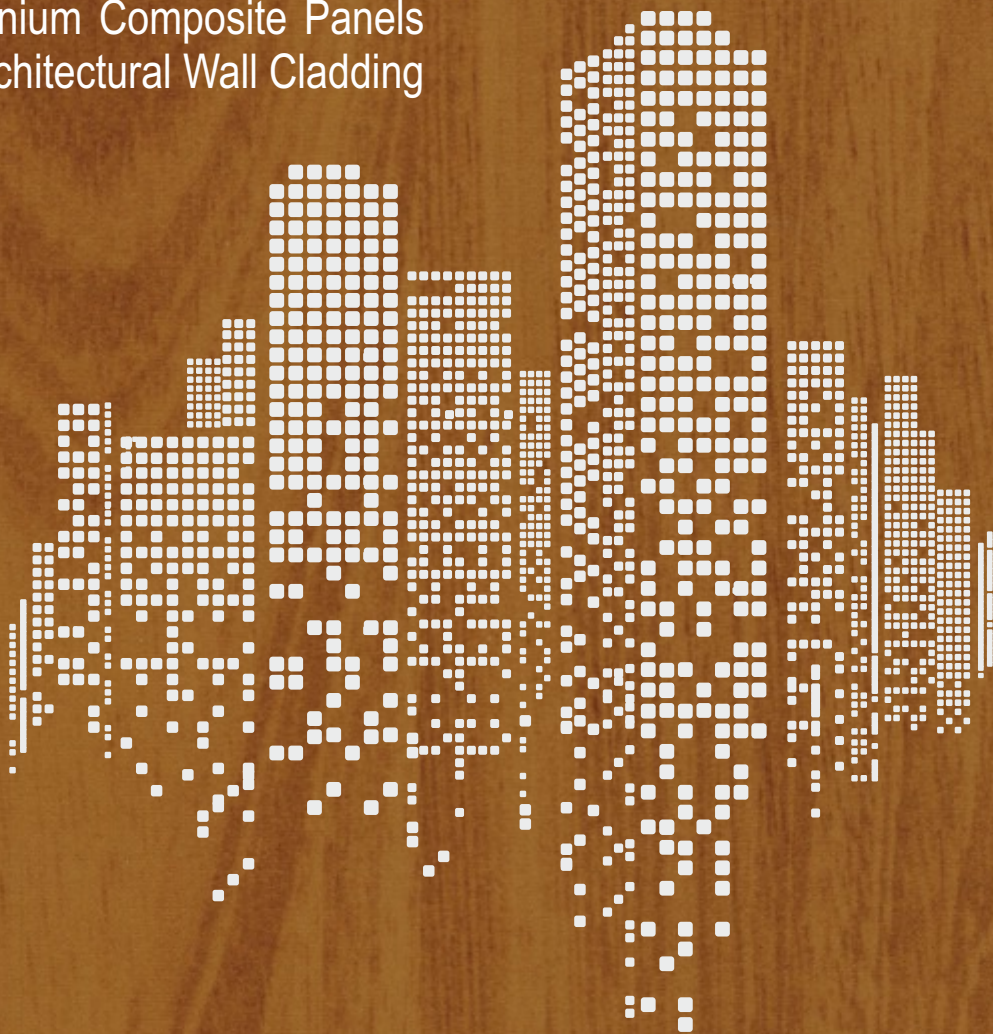


**larson wood**<sup>®</sup>  
by Alucoil<sup>®</sup>

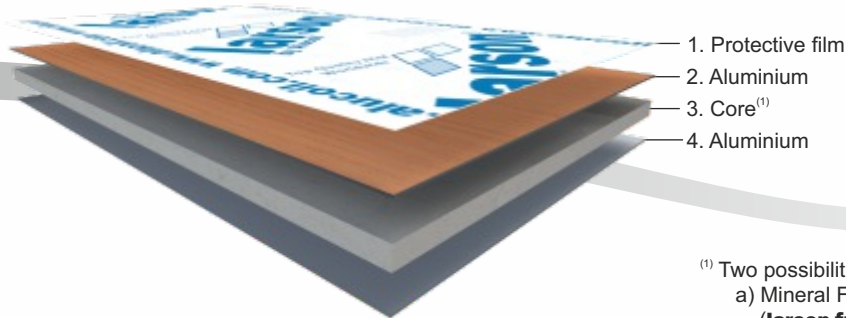
Aluminium Composite Panels  
for Architectural Wall Cladding



Top Quality ACM - Worldwide



**Alucoil**<sup>®</sup>  
Grupo Alibérico



- (1) Two possibilities
- a) Mineral FR core  
(**larson fr**® Fire Class Architectural B-s1,d0 according UNE EN 13501-1)<sup>(2)</sup>
  - b) Polyethylene core  
(product for exclusive use in low buildings, canopies, signalization and corporate identity)

## Aluminium composite panels for architectural wall cladding

**larson**® aluminium composite panel is formed by two aluminum sheets bonded to either a fire resistant mineral core (FR), or a polyethylene core (PE). It is available in wood finishes from several colour schemes in either HQP High Quality Polyester or PVdF with COASTAL PRIMER paint systems, both suitable for outdoor use with outstanding UV performance.

They transmit the warmth of real timber with the advantages of our composite panels, enabling outstanding fabrication capabilities for folding, bending, perforating, and curving without losing its technical characteristics.

Finishes:

- a) **Exclusive:** English Cherry, Elegant Oak, Light Wenge and Dark Wenge
- b) Colonial Red, Wenge Royal, Walnut and Sunglow

larson wood® (FR core)	Aluminium composite panel features	larson wood® (PE core)
3 / 4 / 6 [mm]	Panel thickness	3 / 4 / 6 [mm]
6,14 / 7,78 / 11,06 [kg/m <sup>2</sup> ]	Panel weight	4,66 / 5,56 / 7,36 [kg/m <sup>2</sup> ]
0,5 [mm]	Aluminium thickness	0,5 [mm]
1583 / 3070 / 8630 [mm <sup>4</sup> /m]	Moment of inertia "I"	1346 / 2637 / 6446 [mm <sup>4</sup> /m]
1108 / 2150 / 6041 [kNcm <sup>2</sup> /m]	Rigidity "EI"	942 / 1846 / 4512 [kNcm <sup>2</sup> /m]
1000 - 1250 - 1500 [mm]	Standard width	1000 - 1250 - 1500 [mm]
2000 - 8000 [mm]	Min / max length	2000 - 8000 [mm]
MINERAL FIRE RESISTANT	Core	POLYETHYLENE
B-s1,d0 <sup>(2)</sup> [UNE EN 13501]	Reaction to fire test	<b>M1</b> [UNE 23717 - NF P92-501] <b>CLASS E</b> [EN 13501-1] <b>CLASS 0</b> [BS 476-6 & BS 476-7]
70000 <sup>(1)</sup> [N/mm <sup>2</sup> ]	Modulus of elasticity <sup>(1)</sup> "E"	70000 <sup>(1)</sup> [N/mm <sup>2</sup> ]
125 <sup>(1)</sup> [N/mm <sup>2</sup> ]	Ultimate tensile strength <sup>(1)</sup> "R <sub>m</sub> "	125 <sup>(1)</sup> [N/mm <sup>2</sup> ]
80 <sup>(1)</sup> [N/mm <sup>2</sup> ]	Elasticity limit <sup>(1)</sup> "R <sub>p0,2</sub> "	80 <sup>(1)</sup> [N/mm <sup>2</sup> ]
4 <sup>(1)</sup> [%]	Elongation <sup>(1)</sup> "%"	4 <sup>(1)</sup> [%]
5005	Aluminium alloy	5005
2,3 mm/m Δ100°C	Aluminium thermal expansion	2,3 mm/m Δ100°C
a) HQPE b) PVdF 70% kynar 500 2 layers with <b>COASTAL PRIMER</b> 31μ c) PVdF 70% kynar 500 3 layers 37μ	Coated surface	a) HQPE b) PVdF 70% kynar 500 2 layers with <b>COASTAL PRIMER</b> 31μ c) PVdF 70% kynar 500 3 layers 37μ

<sup>(1)</sup> Aluminium features - Extended technical data sheet under request -  
<sup>(2)</sup> Alucoil's vertical riveted & 45mm cassette installation systems

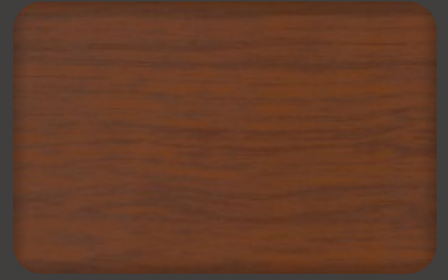




English Cherry EX.



Walnut



Colonial Red



Light Wenge EX.



Sunglow



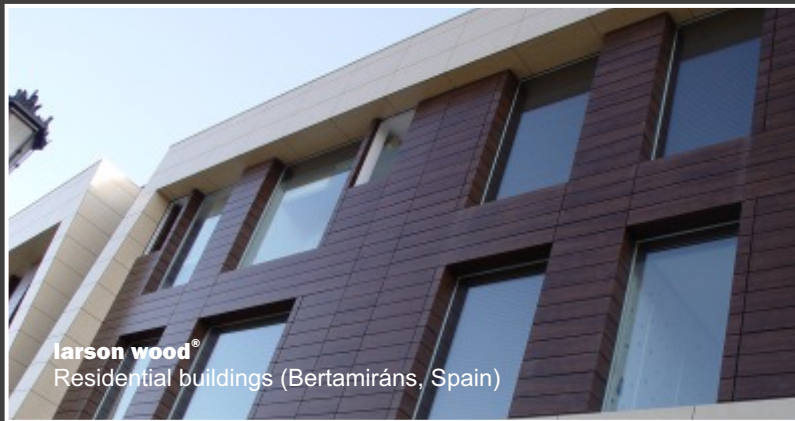
Wenge Royal



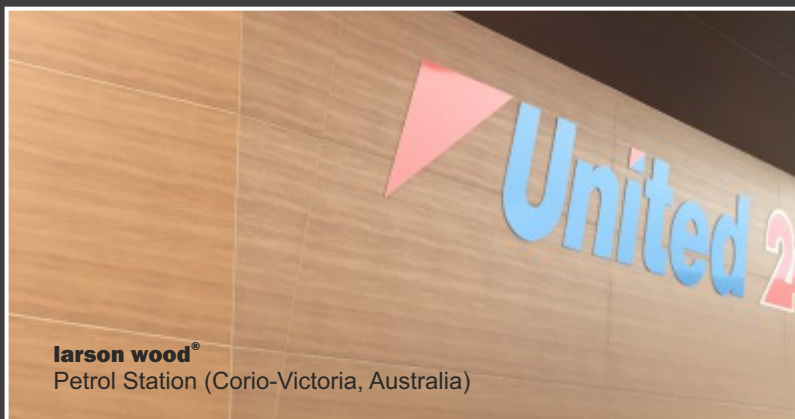
Elegant Oak EX.



Dark Wenge EX.



**laron wood**<sup>®</sup>  
Residential buildings (Bertamirans, Spain)

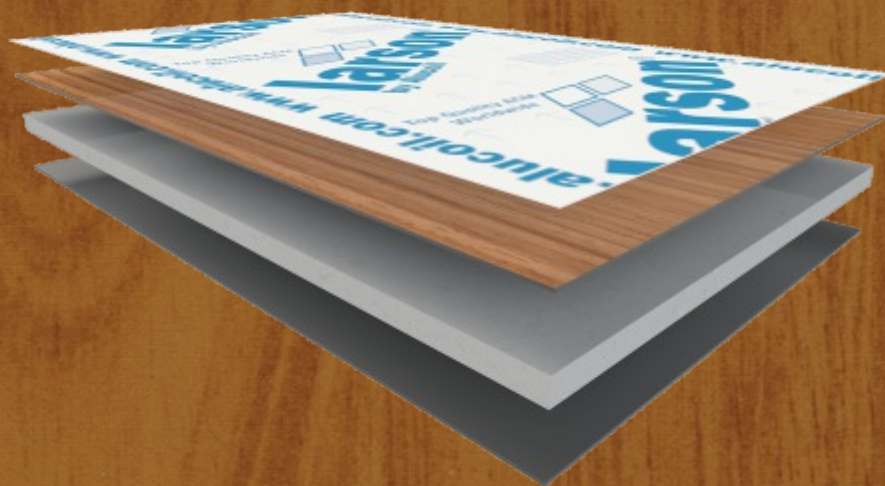


**laron wood**<sup>®</sup>  
Petrol Station (Corio-Victoria, Australia)



**laron wood**<sup>®</sup>  
Music Academy (Bialystok, Poland)

**larson wood**<sup>®</sup>  
by Alucoil<sup>®</sup>



**[www.alucoil.com](http://www.alucoil.com)**

Polígono Industrial de Bayas  
C/ Ircio. Parcelas R72-77  
09200 Miranda de Ebro, Burgos  
**SPAIN**

Tel.: +34 947 333 320 Fax: +34 947 324 913  
[info@alucoil.com](mailto:info@alucoil.com)

  
**Alucoil**<sup>®</sup>  
Grupo Alibérico